



CALIFORNIA DYNAMICS CORPORATION
 5572 ALHAMBRA AVE.
 LOS ANGELES, CA. 90032-3106

CALL US - TO SET THINGS RIGHT

FAX (323) 223 - 7941

PH (323) 223 - 3882

email: caldyn@earthlink.net

TYPE RJSD

ISOLATOR/RESTRAINT

PERFORMANCE RATED

FILE 293

11/26/01

JOB: _____

CUST: _____

ENG'R: _____

TAG: _____

DEF'L: _____

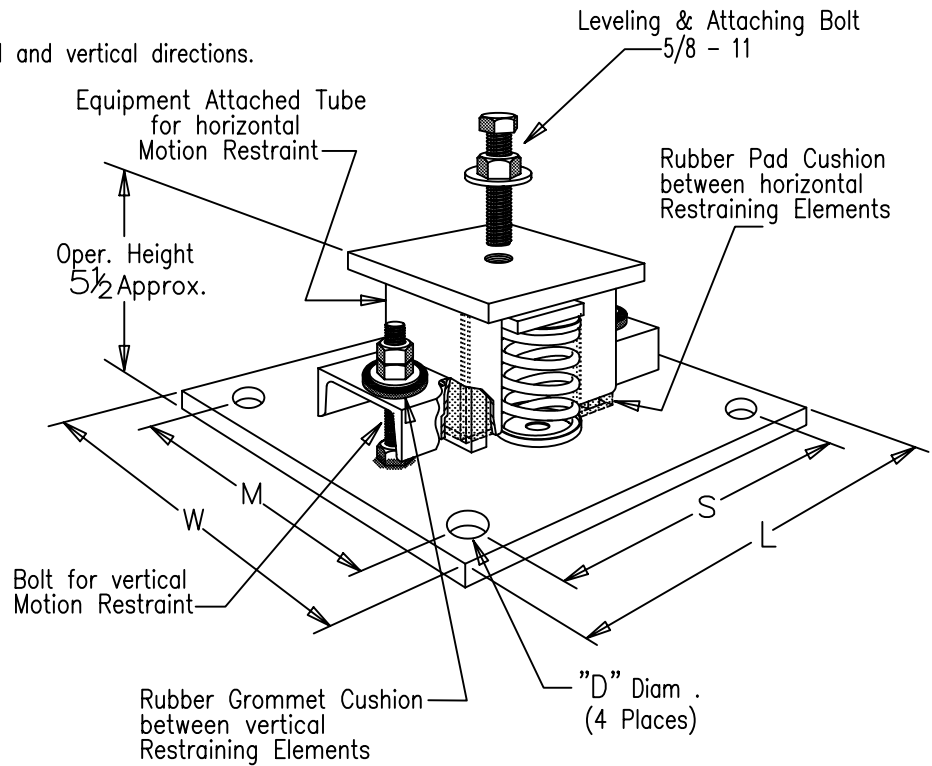
DATE: _____

RESTRAINT PERFORMANCE

Equipment motion is limited in all horizontal and vertical directions.

PROTECTION FOR

- o Earthquakes
- o Windloads
- o Marine installations
- o Mobile installations
- o Equipment weight change due to drainage
- o Unstable installations due to high equipment center of gravity



RESTRAINT CHARACTERISTICS	
Ratings	(Lbs)
Up restraint	5856
End restraint	5600
Side restraint	3666

Restraint ratings determined by independent laboratory test.

VIBRATION ISOLATION CHARACTERISTICS			
Type	Max. Load (lbs)	Max. Defl. (in)	Spring Rate (lbs/in)
RJSD	42K	1 . 13	36
RJSD	110K	1 . 13	98
RJSD	158K	1 . 13	140
RJSD	212K	1 . 13	188
RJSD	240K	2 . 30	104
RJSD	310K	2 . 00	155
RJSD	402K	1 . 70	236
RJSD	488K	1 . 13	432
RJSD	592K	1 . 60	370
RJSD	636K	1 . 13	562
RJSD	790K	1 . 80	440
RJSD	1022K	1 . 50	682
RJSD	1430K	1 . 30	1100
RJSD	1602K	1 . 00	1602
RJSD	2120K	1 . 00	2120
RJSD	3040K	. 78	3900
RJSD	3920K	. 78	5030

BASE PLATE DESIGNATION	DIMENSION (inches)				
	L	S	W	M	D
7855	10	8 1/2	7 1/2	6	5/8
7856	10	8 1/2	9	7 1/2	3/4
7857	12	10	10 1/2	9	7/8

BASE PLATE DESIGNATION MUST BE INCLUDED IN CALLOUT

TYPICAL CALLOUTS

RJSD 1022K 7855

(Minimum base size for use with 1/2 inch anchors).

RJSD 3040K 7857

(Maximum base size to accomodate 3/4 inch anchors).

This rugged spring isolator provides excellent vibration protection for medium & high speed machines installed on grade. Earthquake protection is also provided by means of cushioned, rugged, motion restraining elements manufactured with ideal clearances for maximum vibration isolation efficiency and earthquake protection.